

# **XL8300**

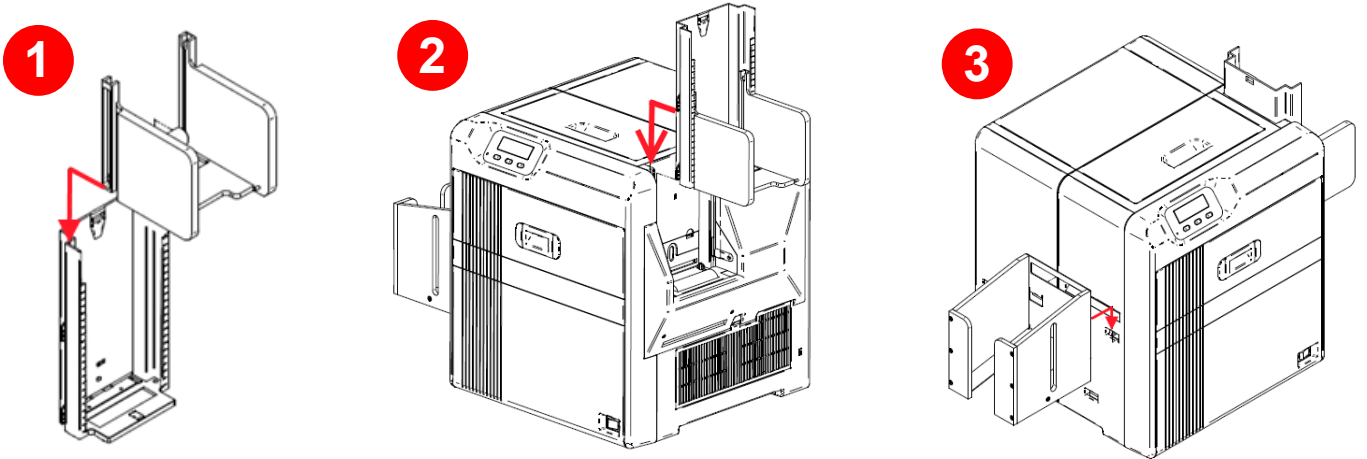
## **Large Format Retransfer Card Printer**

### **Instruction Manual**



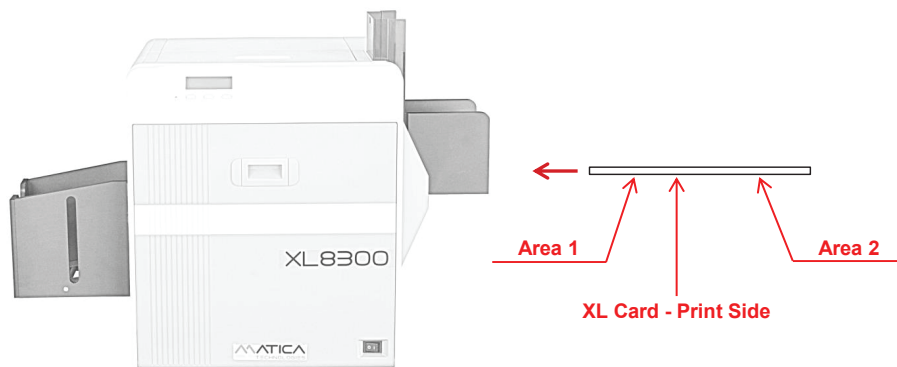
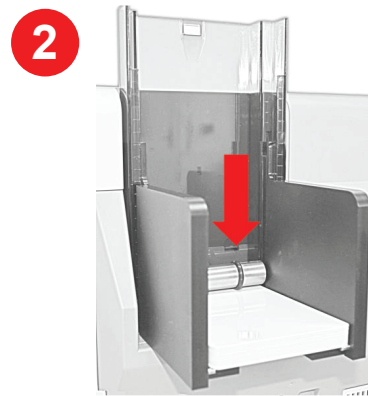
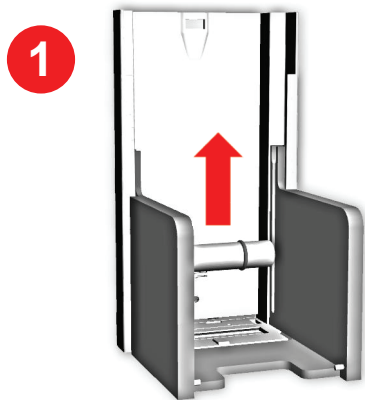
How to assembly

### XL8300 Feeder and Out - Bin Installation



How to assembly

### XL8300 Card Feeding



---

**Table of contents**

---

<b>Introduction.....</b>	<b>5</b>
Product Description.....	5
<b>Oversized Cards.....</b>	<b>6</b>
Oversize card Print Side.....	6
<b>Printer Driver - Printing Preferences Setup.....</b>	<b>7</b>
Full Card or Area 1 Printing Preferences Settings.....	7
Area 2 Printing Preferences Settings.....	8
<b>Consumables Specifications.....</b>	<b>9</b>
Ribbons and Retransfer Film.....	9
Oversized Cards.....	9
Cleaning Supplies.....	9
<b>XL8300 Printer Specifications.....</b>	<b>10</b>

---

## Introduction

This User guide is an addendum of the XID8300 Retransfer Printer, in this guide you'll find the specific instruction for print the XL Cards (large format cards)

For the Driver Installation and General Printer Setup please refer to the XID8300 User Guide

---

## Product Description

The XL8300 is based on the XID8300 in its dual side version including the bend remedy module to print on oversized badges (85,6 mm x 124/140 mm).

In order to accommodate oversized format cards, Matica developed a special input card feeder and output hopper. Both accessories are designed to accommodate up to 100 oversized cards.

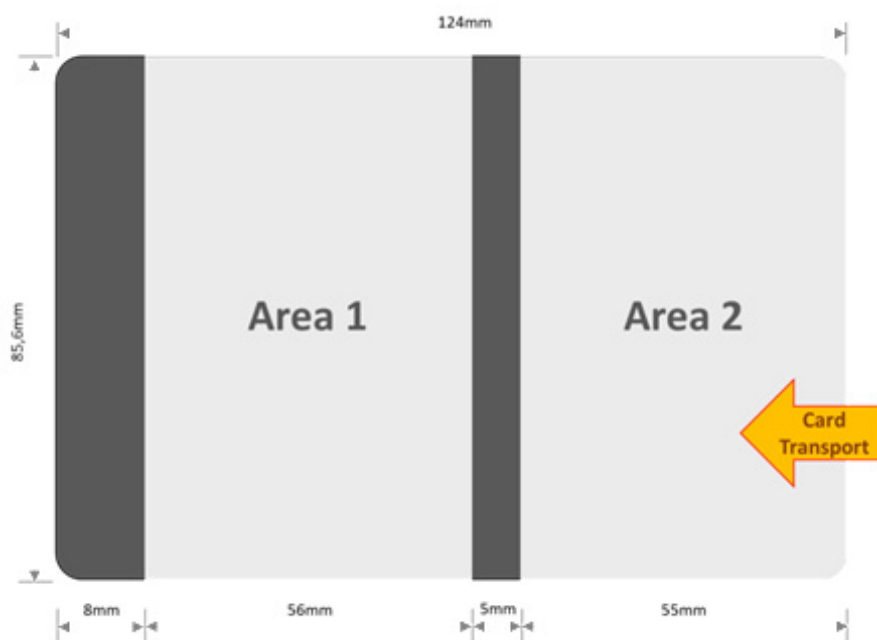
## Oversized cards

The XL8300 is using the double side printing feature to print the graphics of two card “sides” on one oversized card surface. The dedicated XL8300 firmware is controlling the card sensors accordingly.

The accepted oversized card format is 124/140mm x 85,60 mm.

**Important Note:** The XL8300 printer will not accept CR100 or CR80 cards!

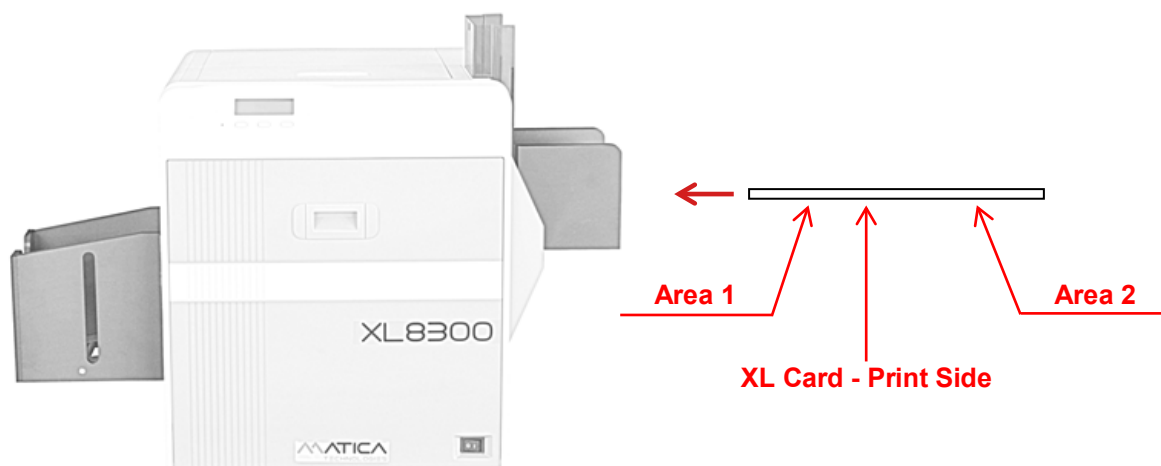
The dimensions of the two printable areas are 85,6 mm x 56 mm for area 1 and 85,6 mm x 55 mm for area 2. These two print areas are fixed and can't be changed / shifted.



As shown in the graphics above, the two print windows do not cover the entire surface of the oversized card bodies. A small, 5 mm area between the two print windows are not printable and remain blank. Further, a 8 mm area at the top of the oversized card will remain unprinted, blank as well.

Hence, it is recommended to use pre-printed cards and integrate the two print areas in an overall card design.

## Oversize card Print Side



## Printer Driver - Printing Preferences Setup

The Card printing Areas mentioned in the chapter above are treated from the Card Designer SW or others Graphical / Word Applications as pages.

Example of Printing Page definition:

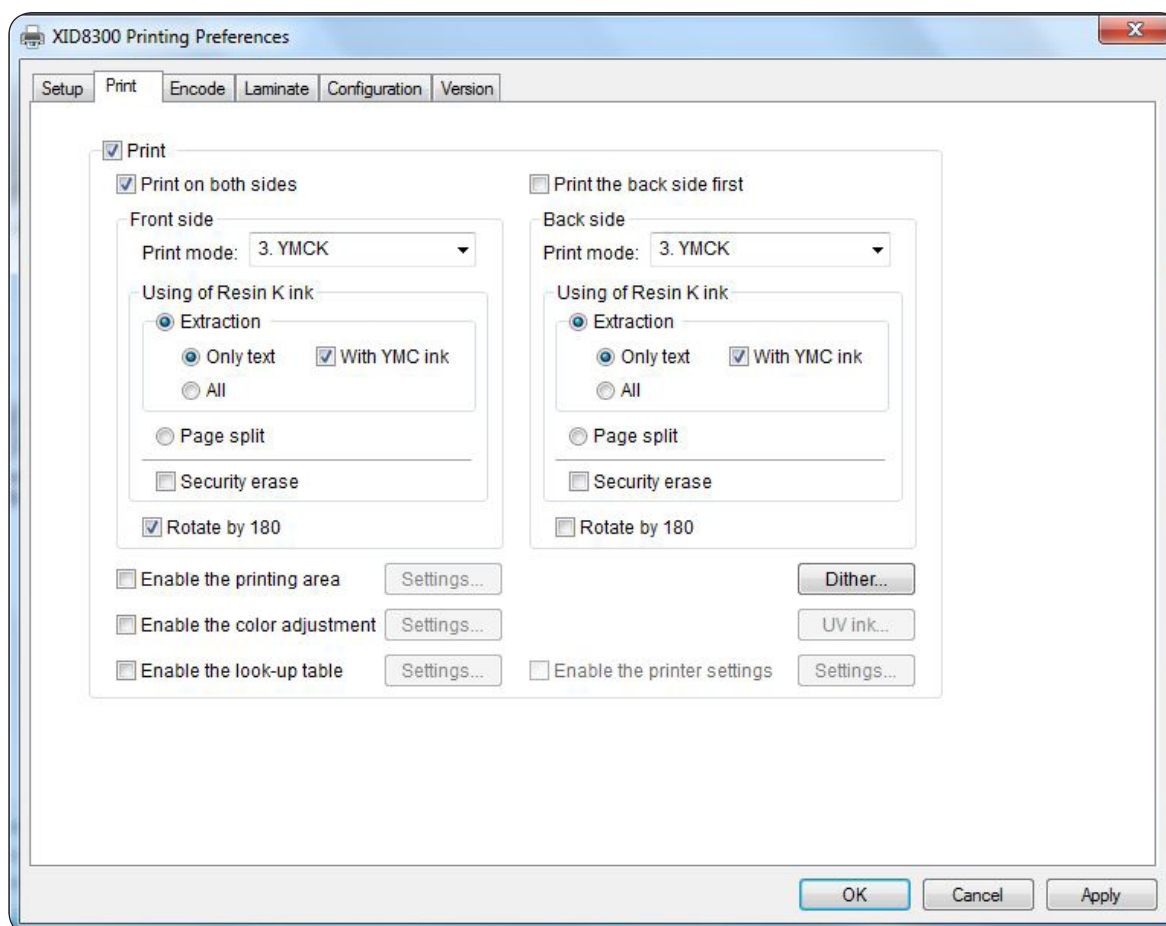
Full Card (Area 1 + Area 2) = Page 1 + Page 2

Print only Area 1 = Page 1

Print only Area 2 = Page 1 (with different settings)

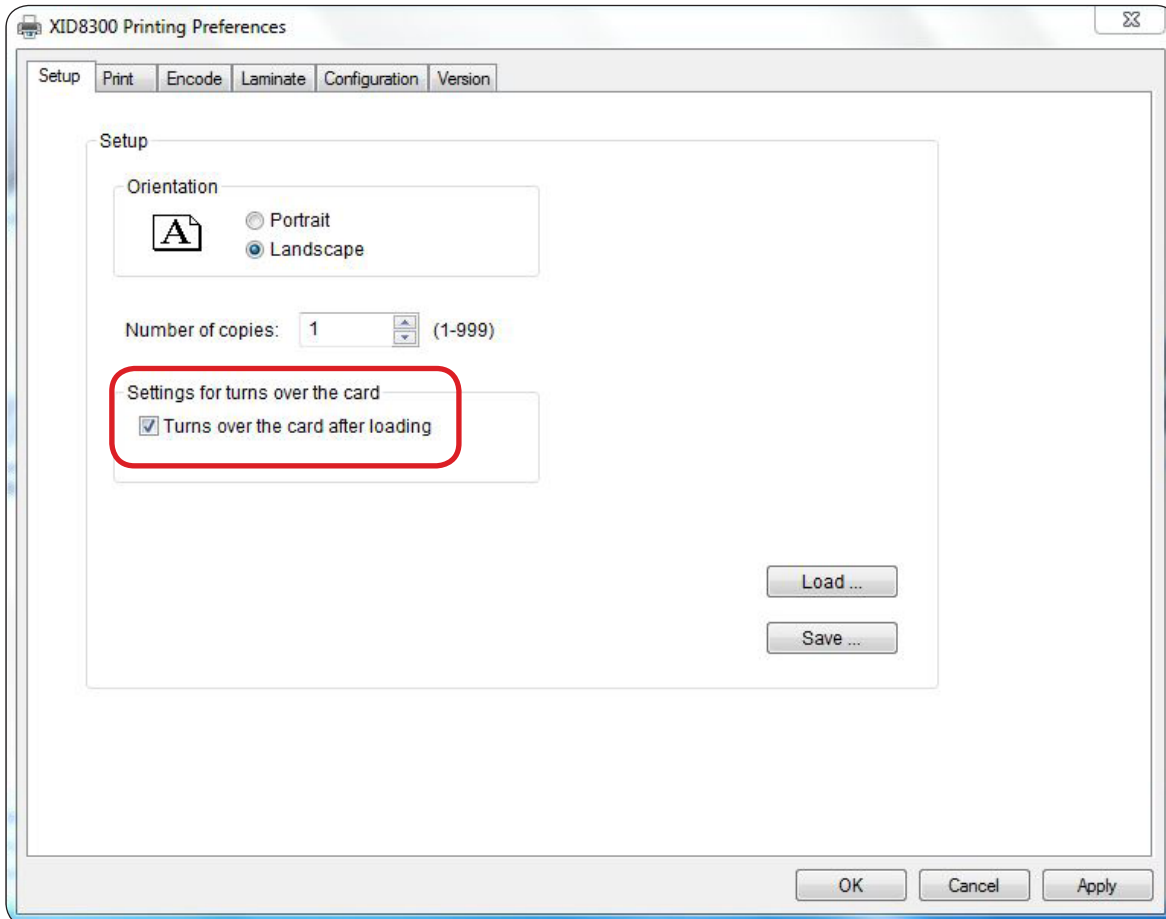
### Full Card or Area 1 Printing Preferences Settings

In the Print Tab it's important to check the two checkbox Print on both sides and Rotate By 180



## Area 2 Printing Preferences Settings

For print only the Area 2 needs to check into Setup Tab the Checkbox Settings for turn over the card see the picture below.



**Important Note:** this parameter has to be checked only for print the area 2, for print the full card or the Area 1 this parameter have to be always unchecked.

The Print Tab maintain the same settings as indicated in the paragraph 3.1



## Consumables Specifications

### Ribbons and Retransfer Film

Consumables	XL8300
<b>Color Ribbon</b>	<b>Yield</b>
- YMCK	Up to 1,000 cards
- YMCKK	Up to 750 cards
- YMCK-UV	Up to 750 cards
- YMCK-PO	Up to 750 cards
<b>Monochrome Ribbon</b>	<b>Yield</b>
- Black (K)	More than 2,200 cards* *depending on the amount of data to be printed

#### UV Printing Important Note

The UV print can only take place at the Area 1 "side" (upper part of the oversized card)

### Oversized Cards

Card Specifications	
Dimension	85,60 mm x124 / 140 mm
Thickness	0,76 mm
Materials	PVC / ABS / PET-G

### Cleaning Supplies

Cleaning	
Roller deep cleaning	Use cleaning kit
Card transport cleaning	Alcohol T-Card; Swops and Cleaning Cards

## XL8300 Printer Specifications

### Printer Specification Part 1

Features	XL8300
Printing technology	Retransfer Technology
Single side printing	Yes
Dual side printing	No
Print resolution	300 dpi
Monochrome (K) printing	Yes
Color printing	Yes
UV printing (only in the upper print area)	Yes
PO ribbon (only in the upper print area)	Yes
<b>Print Speed (cph)</b>	
Oversized monochrome "K", Print Area 1 only	up to 128 cph
Oversized monochrome "K", Print Area 2 only	up to 128 cph
Oversized monochrome "K", Print Area 1 and 2	up to 80 cph
Oversized CMYK, Print Area 1 only	up to 85 cph
Oversized CMYK, Print Area 2 only	up to 85 cph
Oversized CMYK, Print Area 1 and 2	up to 51 cph
<b>Encoding Options</b>	
Contactless chip encoding	Yes
<b>Interface Options</b>	
USB 2.0	Yes (Standard)
Ethernet	Yes (Standard)
<b>Card Feeder / Hopper</b>	
Automatic card feed	Yes
Exceptional Card Feed	No
Input card feeder capacity (oversized cards)	100 Cards (0,76mm)
Output hopper capacity (oversized cards)	100 Cards (0,76mm)
<b>Card Compatibility</b>	
Card specification	124/140mm x 85,60 mm
Card material	PVC / ABS / PET
Printable Area 1 (Upper Area)	56mm x 85,6mm
Printable Area 2 (Lower Area)	55mm x 85,6mm
Card thickness	0,76mm
<b>Operating Systems</b>	
Windows 7 (32 and 64 bit)	Yes
Windows 8 (32 and 64 bit)	Yes
Windows 10 (32 and 64bit)	Coming soon
<b>Software</b>	
Driver	Standard JVC XID 8-Series driver

## Printer Specification Part 2

Features	XL8300
<b>Dimensions (D x W x H)</b>	
Printer dimension printer engine only	322mm x 343mm x 411mm 12,67" x 13,50" x 16,18"
Printer dimension with card feeder and card hopper	322mm x 549mm x 411mm 12,67" x 21,61" x 18,07"
Weight / with feeder & hopper	14,6 kg / 15,6 kg 32,18 lbs / 34,38 lbs
<b>Power Supply</b>	
	Autoswitch 100VAC – 120VAC; +/- 10%; max. 3,5A 220VAC – 240VAC; +/-10%; max. 1,6A 50 / 60; +/- 5% Hz Power consumption 310W
<b>Quality Standards</b>	
	RoHS CE, FCC; UL/CSA; EAC ----- Indoor use only Min/max operating temperature: +15°C to +30°C / 59°F to 86°F Humidity 35% to 70%RH without condensation ----- <b>Note:</b> When using PO or UV ribbons: Min/max operating temperature: +17°C to 28°C / 63°F to 82°F Humidity 35% to 60%RH without condensation ----- Min/max storage temperature: -15°C to +55°C / 5°F to 131°F Storage humidity 20% - 80%RH, no condensation
<b>Security Features</b>	
Consumables Security	Standard retransfer ribbon protection Dedicated ribbon project code on request
<b>Warranty</b>	
Printer Unit	36 Month
Print Head	Lifetime Warranty Conditions apply, refer to warranty conditions for Matica Retransfer Printer

**EUROPE**

Matica Technologies AG  
2 rue de la Chambre aux Deniers  
49000 Angers  
France  
Phone +33 241 43 61 35

**MIDDLE EAST & AFRICA**

Matica Technologies FZE  
Unit E 20  
P.O. Box 54668  
Dubai Airport Free Zone Dubai  
United Arab Emirates  
Phone +971 4 299 4146

**SOUTH EAST ASIA**

Matica Technologies Pte Ltd  
1 Yishun Industrial Street 1  
A'Posh BizHub  
#04-19/20/21/22  
Singapore 768160  
Phone +65 6352 8364

**MAINLAND CHINA**

Matica Technologies (Beijing) Co., Ltd  
Lonsdale Center C207  
No. 5 Wanhong Road  
Chaoyang District  
Beijing 100015  
P.R. China  
Phone +86 10 6437 4376

**NORTH EAST ASIA**

Matica Technologies APAC Ltd  
Unit C, 22/F. Infotech Centre  
21 Hung To Road  
Kwun Tong Kowloon  
Hong Kong  
Phone +852 3707 3812

**NORTH AMERICA & CANADA**

Matica Technologies Inc.  
111 Kiowa Lane  
Piedmont, SC 29673  
United States of America  
Phone +1 864 272 1199

**CENTRAL & LATIN AMERICA**

Matica Technologies Inc.  
Huntington Square III  
3350 SW 148th Avenue  
Suite 110  
Miramar, Florida, 33027  
United States of America  
Phone +1 954 874 1714



Matica Technologies AG  
(Headquarters)  
Theresienhöhe 30  
80339 München  
Germany

[www.maticatech.com](http://www.maticatech.com)